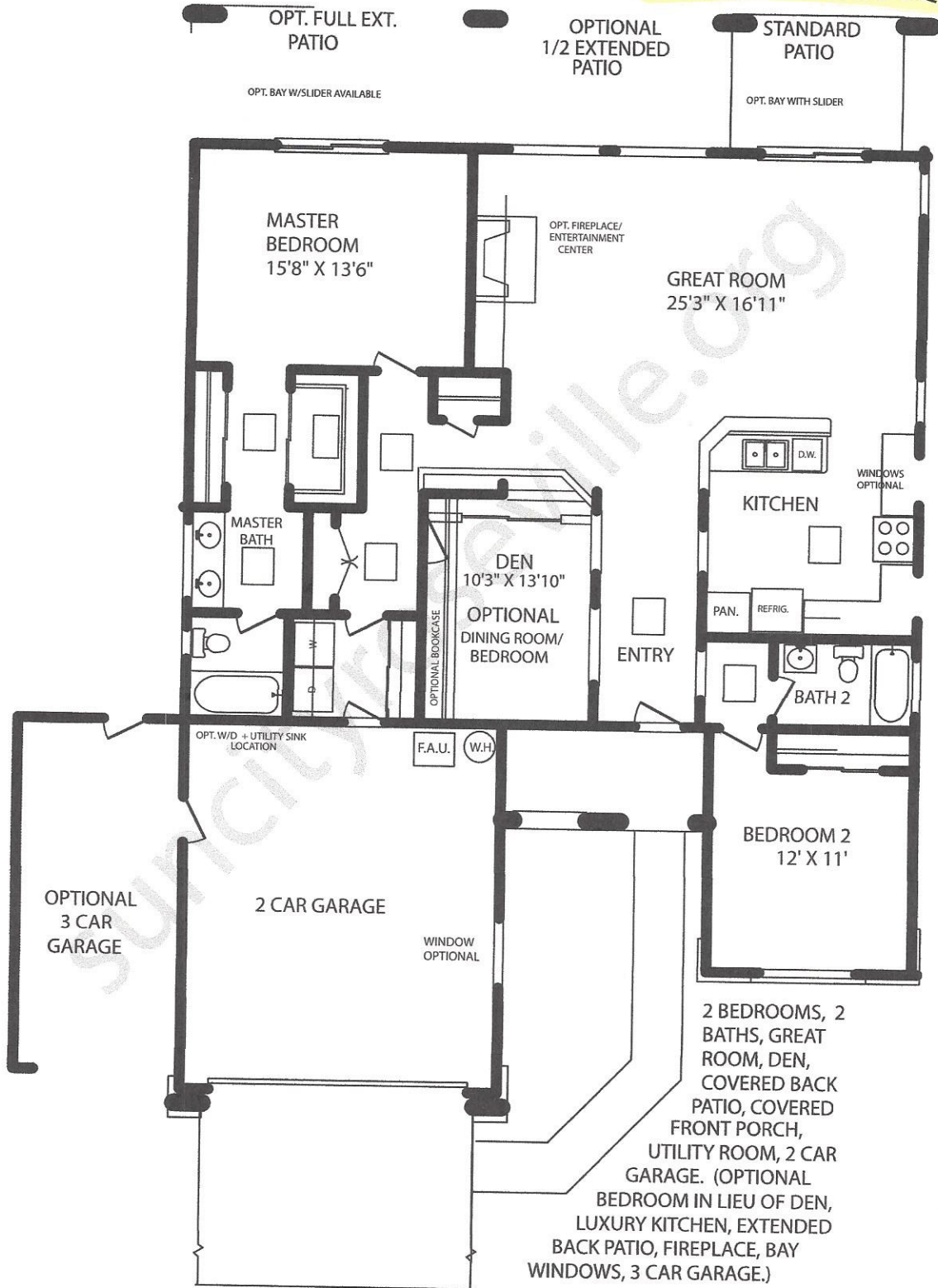


GROVE 1752 SQ. FT.



2 BEDROOMS, 2 BATHS, GREAT ROOM, DEN, COVERED BACK PATIO, COVERED FRONT PORCH, UTILITY ROOM, 2 CAR GARAGE. (OPTIONAL BEDROOM IN LIEU OF DEN, LUXURY KITCHEN, EXTENDED BACK PATIO, FIREPLACE, BAY WINDOWS, 3 CAR GARAGE.)